

Unleash Innovation on the Open Road.

The network is a critical component of IoT solutions, but it's often an add-on, or in many cases, an afterthought for your customers. Don't let your innovative technology be limited by connectivity choices on the front end. Harness all that's possible on T-Mobile's mid-band LTE, bundled and ready to go to your customers.

Data collected is data wasted without connectivity.

You're developing the products of the future and your customers are ready for them, but there's a catch: what about the network? You can't afford to invest in that development only to have its evolution stifled by lack of connectivity.

From truck manufacturing to rental car companies to sensitive packages in transit across the nation, you can be free to design one-of-a-kind IoT solutions knowing T-Mobile has connectivity on all three LTE data spectrum bands:

- **Low-band for coverage reach;**
- **Mid-band for coverage and capacity depth;**
- **And high-band to enable low-latency and real-time application requirements**

Deliver the coverage advantage that 600MHz provides.

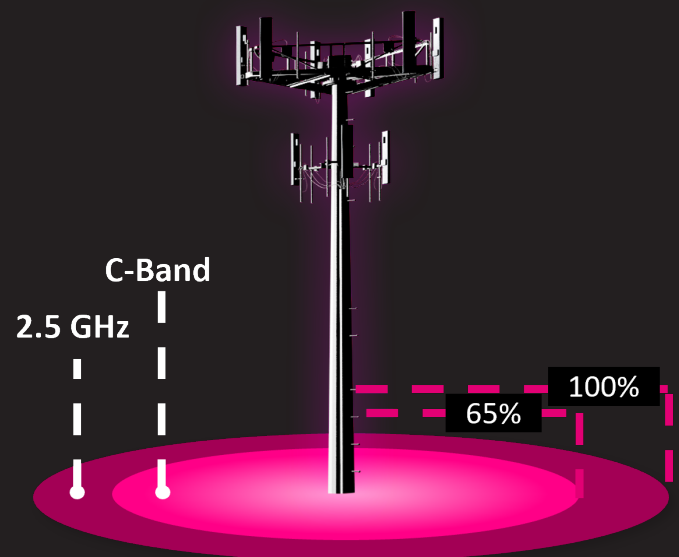
By combining a focused deployment of 600MHz spectrum with a complementary 2.5GHz spectrum, T-Mobile's coverage footprint extends from dense urban cities, through suburban developments, and out to rural geographies.

Offer extended range 5G that leads the pack.

No matter how you slice it, your customers will be able to rely on better coverage on a network that's years ahead of others. With our powerful 600MHz signal at its foundation, there is no larger network in the nation.

Capable device required for 5G; coverage not available in some areas. Some uses may require certain plan or feature; see [T-Mobile.com](https://www.t-mobile.com).

2.5 GHz vs. C-Band



We're building a future-proof network that fits the full range of your IoT device availability and connectivity needs

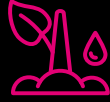
LTE-M/4G LTE



Smart meters



Industrial sensors



Environmental sensors



Facilities monitoring



Fleet and asset tracking

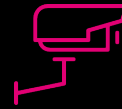
LTE-5G



Traffic routing



Advanced driver assistance systems and fleet telematics



Real-time video surveillance



Time-sensitive industrial automation

T-Mobile has a comprehensive portfolio of certified devices, chipsets, and modules for your IoT solutions. We also have a streamlined solution for getting your new products and devices certified.

5G use cases are still emerging and new devices being created; see details on current 5G capabilities & services.

A T-Mobile partnership brings fleet management and monitoring into focus while helping you navigate other issues like supply chain, OEM relationships and more.



Sync your sensors and devices across almost all distances and topographies



Identify the right connectivity for your use cases



Monitor your solutions on a powerful and intuitive interface



Accelerate fleet management needs like maintenance, automation, and routing



Realize greater cost savings with out-of-the-box usability

T-Mobile is leading the way with a network built to support IoT today and into the future.

Visit us at wholesale.t-mobile.com/iot-solutions